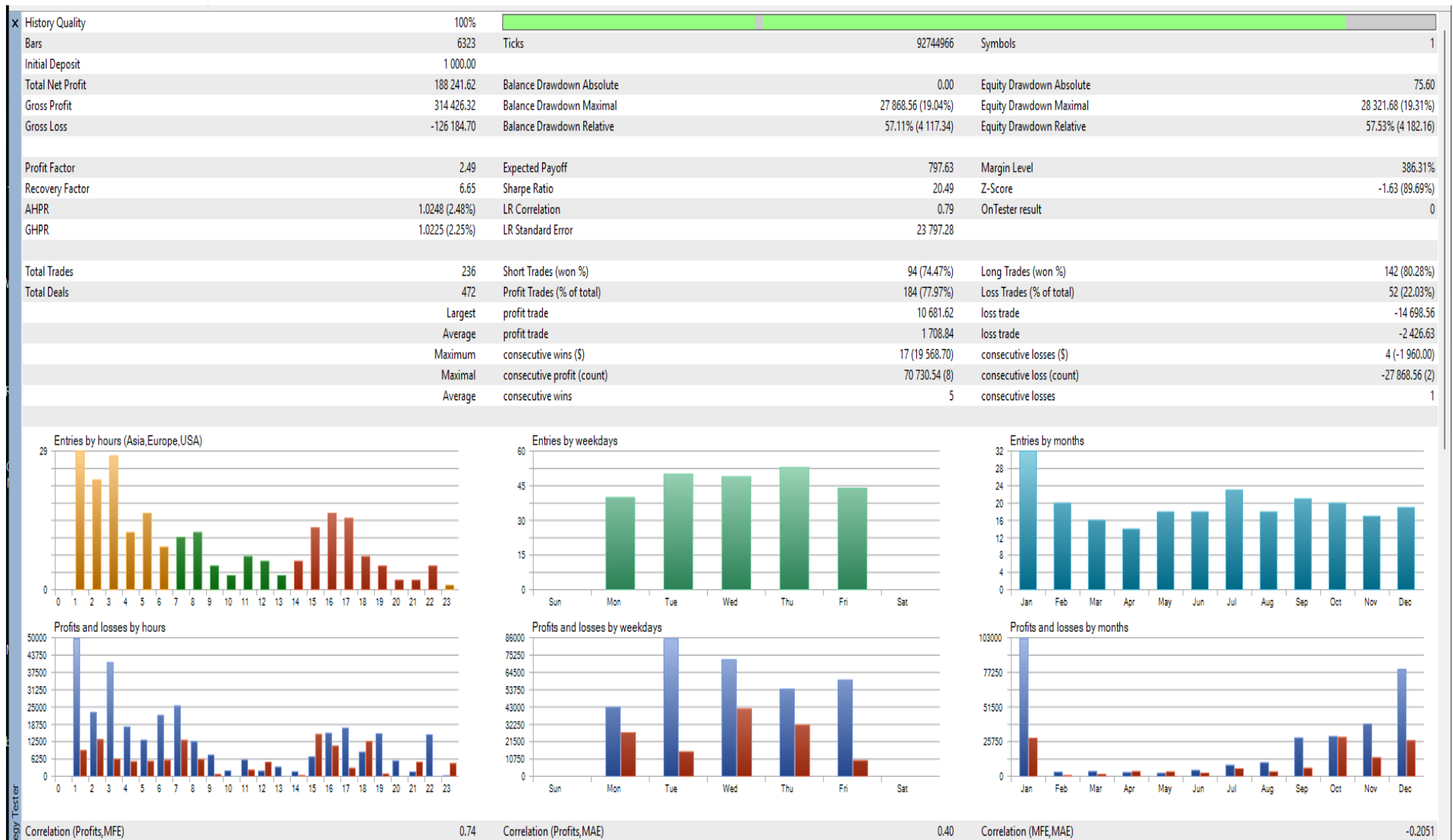


Aurean EA Monthly Backtest Report

ACCOUNT PROTECTION IS THE EA'S PRIMARY FUNCTIONALITY

2025-2026 (Full Year Backtest Report)



Overall Performance Summary

Starting balance: \$1,000

Closing balance: \$188,241

Total net profit: \$187,241

Account growth: 18,724% in one year

Profit factor: 2.49

Recovery factor: 6.66

Long trade accuracy: 80%

Short trade accuracy: 74%

Maximum consecutive wins: 8

Maximum consecutive losses: 2

Summary:

Starting balance was 1,000 USD and the account grew to a closing balance of 188,241 USD within one year.

The total net profit achieved during the period was 187,241 USD, resulting in an overall account growth of 18,724 percent.

The Expert Advisor maintained a strong profit factor of 2.49, indicating stable profitability over losses.

A recovery factor of 6.66 shows efficient drawdown recovery and strong capital protection.

Long (buy) trades achieved an accuracy of 80 percent, while short (sell) trades maintained an accuracy of 74 percent.

The system recorded a maximum of 8 consecutive winning trades, demonstrating consistent performance.

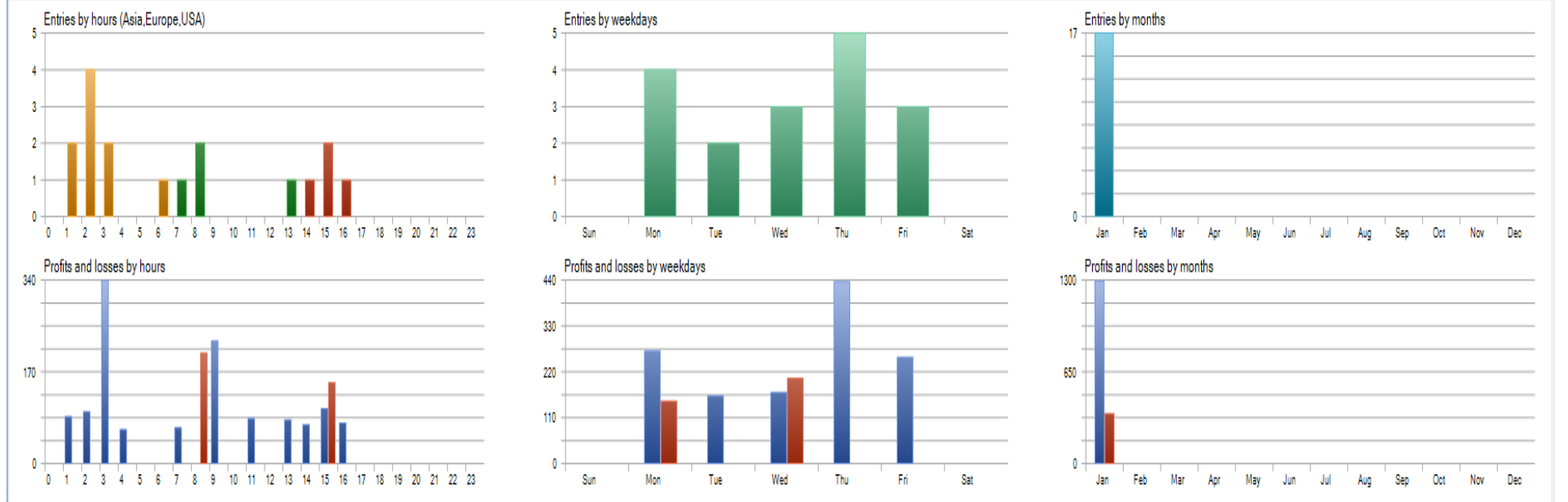
The maximum consecutive losing trades were limited to only 2, reflecting controlled risk management.

Overall performance confirms high profitability, strong consistency, controlled drawdowns, and reliable results across both bullish and bearish market conditions.

2025-Jan Month Report

Starting Balance \$1000 (Risk per Trade 10%)

History Quality	100%	<div style="width: 100%; height: 10px; background-color: #90EE90;"></div>			
Bars	481	Ticks	3381065	Symbols	1
Initial Deposit	1 000.00				
Total Net Profit	938.85	Balance Drawdown Absolute	0.00	Equity Drawdown Absolute	75.60
Gross Profit	1 293.85	Balance Drawdown Maximal	205.00 (10.09%)	Equity Drawdown Maximal	300.95 (14.47%)
Gross Loss	-355.00	Balance Drawdown Relative	10.09% (205.00)	Equity Drawdown Relative	18.13% (273.54)
Profit Factor	3.64	Expected Payoff	55.23	Margin Level	809.96%
Recovery Factor	3.12	Sharpe Ratio	17.98	Z-Score	1.30 (80.64%)
AHPR	1.0411 (4.11%)	LR Correlation	0.97	OnTester result	0
GHPR	1.0397 (3.97%)	LR Standard Error	76.41		
Total Trades	17	Short Trades (won %)	5 (80.00%)	Long Trades (won %)	12 (91.67%)
Total Deals	34	Profit Trades (% of total)	15 (88.24%)	Loss Trades (% of total)	2 (11.76%)
	Largest	profit trade	115.52	loss trade	-205.00
	Average	profit trade	86.26	loss trade	-177.50
	Maximum	consecutive wins (\$)	7 (680.37)	consecutive losses (\$)	1 (-205.00)
	Maximal	consecutive profit (count)	680.37 (7)	consecutive loss (count)	-205.00 (1)
	Average	consecutive wins	5	consecutive losses	1



Overall Performance Summary

Starting balance: \$1,000

Closing balance: \$1939

Total net profit: \$939

Account growth: 93% in one month

Profit factor: 3.64

Recovery factor: 3.12

Long trade accuracy: 91%

Short trade accuracy: 80%

Maximum consecutive wins: 7

Maximum consecutive losses: 1

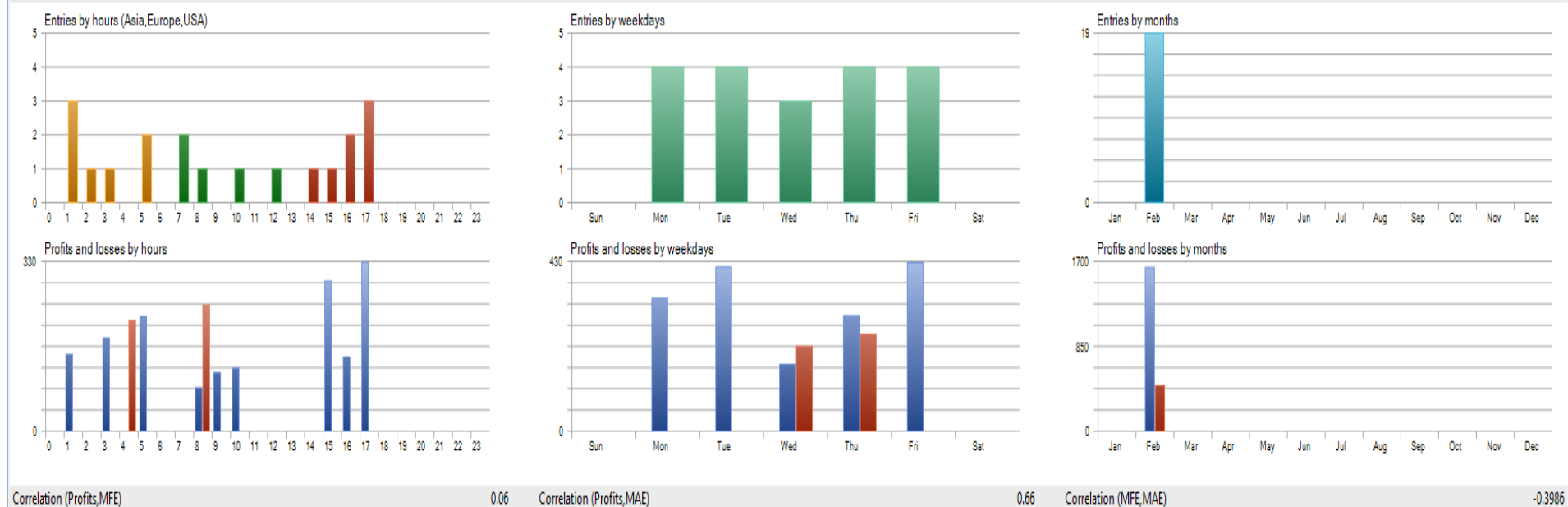
Summary:

The trading system delivered strong performance over a one-month period, growing the account from a starting balance of \$1,000 to \$1,939 and generating a total net profit of \$939, representing a 93% account growth. The strategy maintained an excellent profit factor of 3.64, indicating highly efficient profit generation relative to losses, while a recovery factor of 3.12 reflects solid drawdown recovery. Trade execution accuracy was particularly strong on long positions with a 91% win rate, while short trades achieved an 80% success rate. The system demonstrated consistency with a maximum of 7 consecutive winning trades and limited risk exposure, as the maximum consecutive losses were restricted to only 1 trade.

2025-Feb Month Report

Starting Balance \$1000 (Risk per Trade 10%)

History Quality	100%				
Bars	435	Ticks	3313510	Symbols	1
Initial Deposit	1 000.00				
Total Net Profit	1 181.41	Balance Drawdown Absolute	0.00	Equity Drawdown Absolute	50.00
Gross Profit	1 642.33	Balance Drawdown Maximal	245.49 (10.12%)	Equity Drawdown Maximal	450.19 (19.97%)
Gross Loss	-460.92	Balance Drawdown Relative	10.12% (245.49)	Equity Drawdown Relative	19.97% (450.19)
Profit Factor	3.56	Expected Payoff	62.18	Margin Level	770.13%
Recovery Factor	2.62	Sharpe Ratio	21.99	Z-Score	-0.11 (8.76%)
AHPR	1.0432 (4.32%)	LR Correlation	0.98	OnTester result	0
GHPR	1.0419 (4.19%)	LR Standard Error	89.10		
Total Trades	19	Short Trades (won %)	7 (85.71%)	Long Trades (won %)	12 (91.67%)
Total Deals	38	Profit Trades (% of total)	17 (89.47%)	Loss Trades (% of total)	2 (10.53%)
	Largest	profit trade	138.92	loss trade	-245.49
	Average	profit trade	96.61	loss trade	-230.46
	Maximum	consecutive wins (\$)	13 (1 137.41)	consecutive losses (\$)	1 (-245.49)
	Maximal	consecutive profit (count)	1 137.41 (13)	consecutive loss (count)	-245.49 (1)
	Average	consecutive wins	9	consecutive losses	1



Correlation (Profits,MFE) 0.06 Correlation (Profits,MAE) 0.66 Correlation (MFE,MAE) -0.3986

Overall Performance Summary

Starting balance: \$1,000

Closing balance: \$2181

Total net profit: \$1181

Account growth: 118% in one month

Profit factor: 3.56

Recovery factor: 2.62

Long trade accuracy: 91%

Short trade accuracy: 85%

Maximum consecutive wins: 9

Maximum consecutive losses: 1

Summary:

The trading system delivered strong performance over the one-month period, growing the account from an initial balance of \$1,000 to a closing balance of \$2,181, generating a net profit of \$1,181. This represents an impressive 118% account growth within a single month.

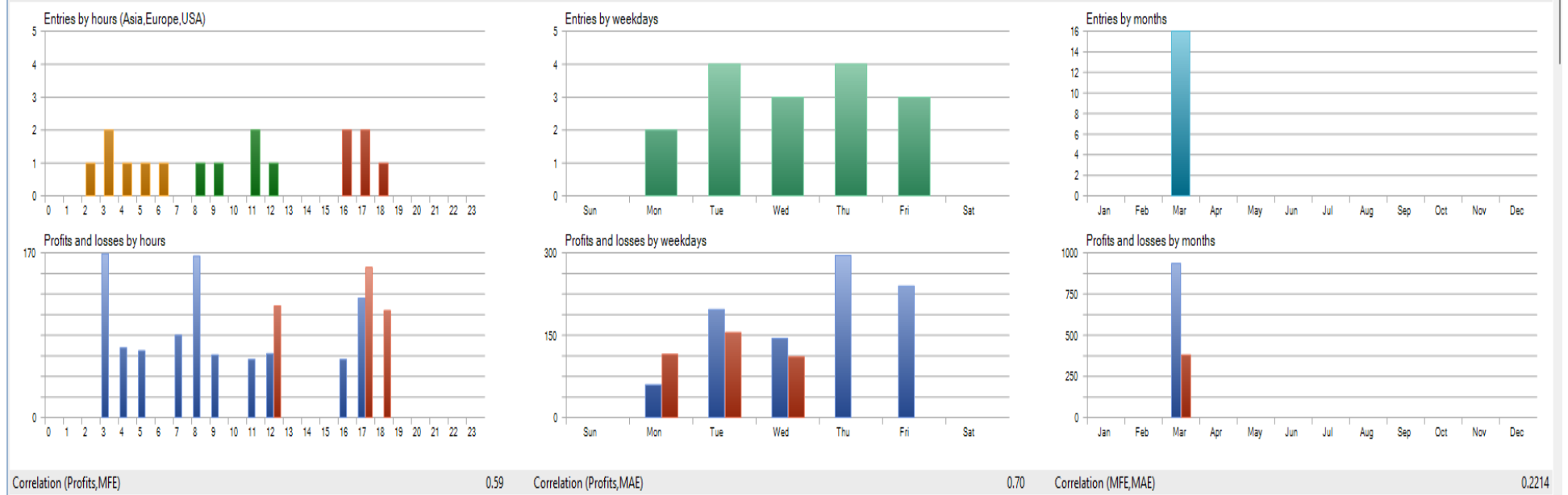
The system demonstrated excellent trade quality and risk control, reflected by a high profit factor of 3.56 and a recovery factor of 2.62, indicating efficient drawdown recovery and consistent profitability. Trade accuracy remained notably high, with 91% success on long positions and 85% on short positions.

Risk stability was further supported by disciplined execution, achieving a maximum of 9 consecutive winning trades while limiting losses to only 1 consecutive losing trade. Overall, the results highlight a well-balanced, high-probability trading strategy with strong consistency, controlled risk, and robust growth potential.

2025-Mar Month Report

Starting Balance \$1000 (Risk per Trade 10%)

History Quality	100%	<div style="width: 100%; height: 10px; background-color: #90EE90;"></div>			
Bars	460	Ticks	3407428	Symbols	1
Initial Deposit	1 000.00				
Total Net Profit	556.25	Balance Drawdown Absolute	0.00	Equity Drawdown Absolute	5.60
Gross Profit	936.92	Balance Drawdown Maximal	155.00 (10.08%)	Equity Drawdown Maximal	307.48 (19.04%)
Gross Loss	-380.67	Balance Drawdown Relative	10.13% (115.23)	Equity Drawdown Relative	19.04% (307.48)
Profit Factor	2.46	Expected Payoff	34.77	Margin Level	739.46%
Recovery Factor	1.81	Sharpe Ratio	11.22	Z-Score	1.45 (85.29%)
AHPR	1.0301 (3.01%)	LR Correlation	0.92	OnTester result	0
GHPR	1.0280 (2.80%)	LR Standard Error	78.36		
Total Trades	16	Short Trades (won %)	3 (66.67%)	Long Trades (won %)	13 (84.62%)
Total Deals	32	Profit Trades (% of total)	13 (81.25%)	Loss Trades (% of total)	3 (18.75%)
	Largest	profit trade	88.45	loss trade	-155.00
	Average	profit trade	72.07	loss trade	-126.89
	Maximum	consecutive wins (\$)	7 (515.64)	consecutive losses (\$)	1 (-155.00)
	Maximal	consecutive profit (count)	515.64 (7)	consecutive loss (count)	-155.00 (1)
	Average	consecutive wins	3	consecutive losses	1



Overall Performance Summary

Starting balance: \$1,000

Closing balance: \$1556

Total net profit: \$556

Account growth: 55.6% in one month

Profit factor: 2.46

Recovery factor: 1.81

Long trade accuracy: 84%

Short trade accuracy: 66%

Maximum consecutive wins: 3

Maximum consecutive losses: 1

Summary:

Over the one-month trading period, the system increased the account balance from \$1,000 to \$1,556, generating a net profit of \$556, which equals 55.6% account growth.

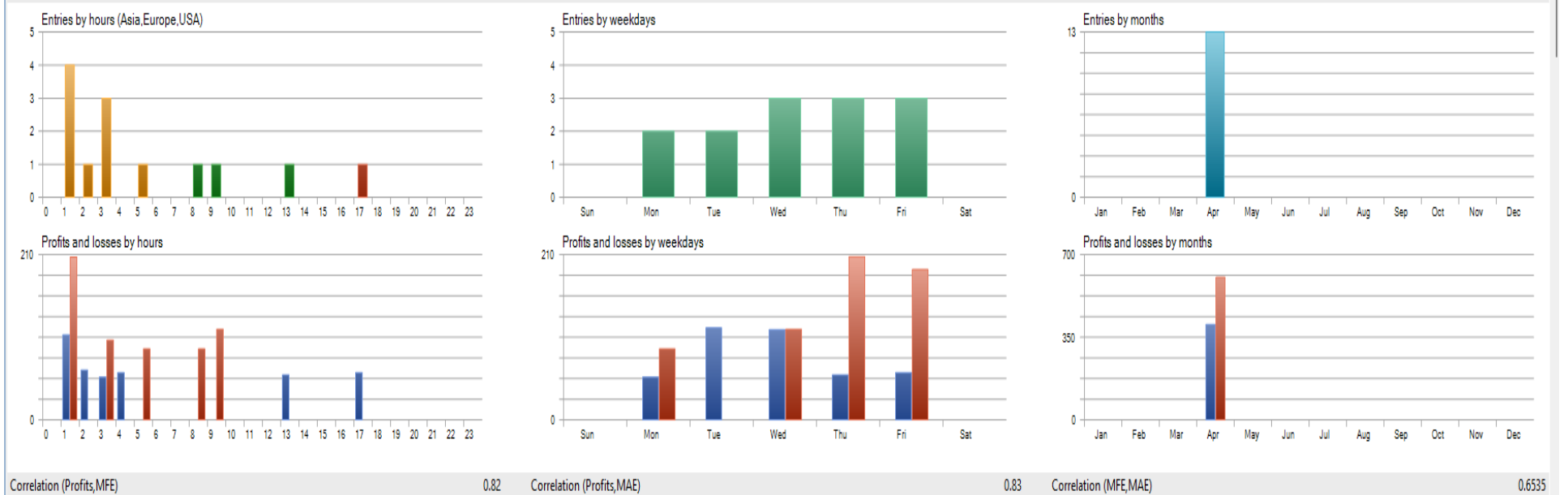
The strategy maintained solid profitability with a profit factor of 2.46, indicating that winning trades significantly outweighed losses, while a recovery factor of 1.81 reflects acceptable drawdown management. Trade execution showed strong performance on long positions with an 84% accuracy rate, while short trades achieved a 66% success rate.

Risk control remained stable throughout the period, with a maximum of 3 consecutive winning trades and only 1 consecutive losing trade, demonstrating disciplined trade management and controlled exposure. Overall, the system shows consistent returns with moderate risk and reliable performance.

2025-Apr Month Report

Starting Balance \$1000 (Risk per Trade 10%)

History Quality	100%	<div style="width: 100%; height: 10px; background-color: #90EE90;"></div>			
Bars	460	Ticks	3875251	Symbols	1
Initial Deposit	1 000.00				
Total Net Profit	-200.47	Balance Drawdown Absolute	200.47	Equity Drawdown Absolute	200.47
Gross Profit	403.75	Balance Drawdown Maximal	335.63 (29.57%)	Equity Drawdown Maximal	345.29 (30.16%)
Gross Loss	-604.22	Balance Drawdown Relative	29.57% (335.63)	Equity Drawdown Relative	30.16% (345.29)
Profit Factor	0.67	Expected Payoff	-15.42	Margin Level	677.29%
Recovery Factor	-0.58	Sharpe Ratio	-2.07	Z-Score	-0.56 (42.45%)
AHPR	0.9862 (-1.38%)	LR Correlation	-0.65	OnTester result	0
GHPR	0.9829 (-1.71%)	LR Standard Error	76.25		
Total Trades	13	Short Trades (won %)	4 (75.00%)	Long Trades (won %)	9 (44.44%)
Total Deals	26	Profit Trades (% of total)	7 (53.85%)	Loss Trades (% of total)	6 (46.15%)
	Largest	profit trade	63.63	loss trade	-115.23
	Average	profit trade	57.68	loss trade	-100.70
	Maximum	consecutive wins (\$)	3 (181.21)	consecutive losses (\$)	3 (-306.99)
	Maximal	consecutive profit (count)	181.21 (3)	consecutive loss (count)	-306.99 (3)
	Average	consecutive wins	2	consecutive losses	2



Overall Performance Summary

Starting balance: \$1,000

Closing balance: \$800

Total net profit: \$-200

Account growth: -20% in one month

Profit factor: 0.67

Recovery factor: -0.58

Long trade accuracy: 44%

Short trade accuracy: 75%

Maximum consecutive wins: 2

Maximum consecutive losses: 2

Summary:

During this one-month period, the account declined from a starting balance of \$1,000 to a closing balance of \$800, resulting in a net loss of \$200 and -20% account growth. The profit factor of 0.67 and recovery factor of -0.58 indicate that market conditions during this month were unfavorable for the strategy.

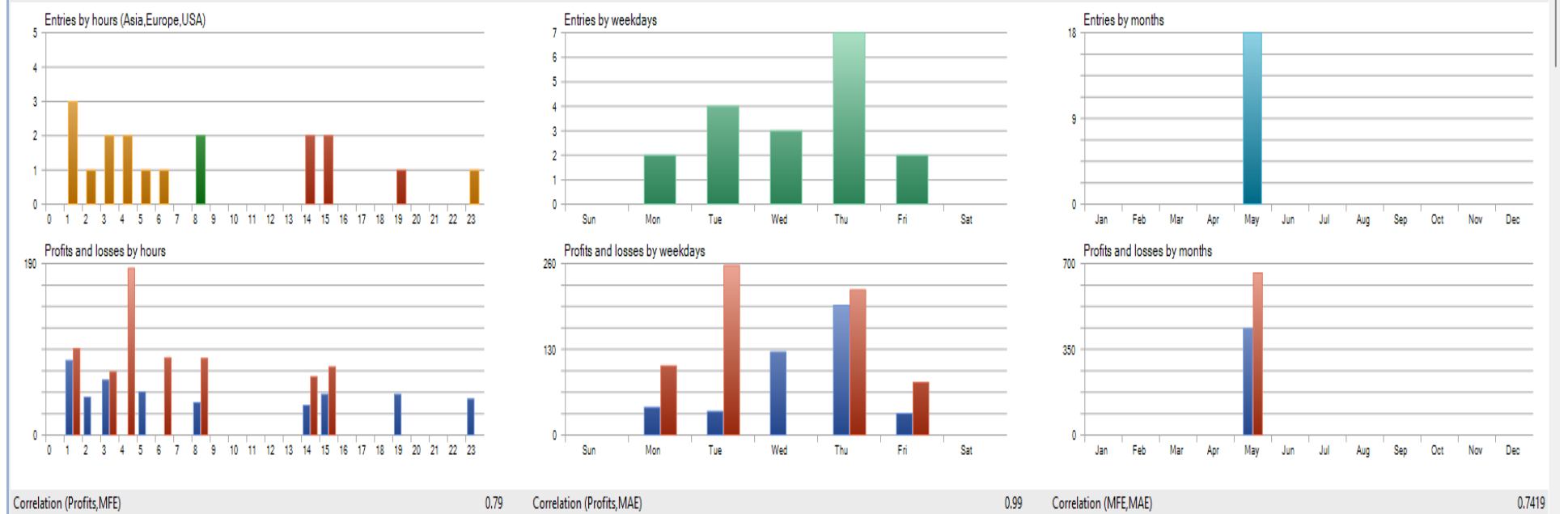
Trade accuracy was mixed, with 44% success on long trades and a relatively stronger 75% accuracy on short trades. The system recorded a maximum of 2 consecutive winning trades and 2 consecutive losing trades, reflecting choppy and inconsistent price action.

It is important to note that all months are not the same in trading. Periods of drawdown are a natural part of any profitable strategy and often occur due to changing market structure, volatility, or directional bias. This month represents a temporary underperformance phase rather than a failure of the system, highlighting the importance of long-term evaluation, risk management, and consistency across multiple market cycles.

2025-May Month Report

Starting Balance \$1000 (Risk per Trade 10%)

History Quality	100%	100%			
Bars	504	Ticks	4564968	Symbols	1
Initial Deposit	1 000.00				
Total Net Profit	-228.37	Balance Drawdown Absolute	425.21	Equity Drawdown Absolute	425.98
Gross Profit	434.28	Balance Drawdown Maximal	486.21 (45.83%)	Equity Drawdown Maximal	524.15 (47.73%)
Gross Loss	-662.65	Balance Drawdown Relative	45.83% (486.21)	Equity Drawdown Relative	47.73% (524.15)
Profit Factor	0.66	Expected Payoff	-12.69	Margin Level	666.39%
Recovery Factor	-0.44	Sharpe Ratio	-5.00	Z-Score	-1.18 (76.20%)
AHPR	0.9890 (-1.10%)	LR Correlation	-0.73	OnTester result	0
GHPR	0.9857 (-1.43%)	LR Standard Error	90.81		
Total Trades	18	Short Trades (won %)	11 (63.64%)	Long Trades (won %)	7 (42.86%)
Total Deals	36	Profit Trades (% of total)	10 (55.56%)	Loss Trades (% of total)	8 (44.44%)
	Largest	profit trade	61.00	loss trade	-105.00
	Average	profit trade	43.43	loss trade	-82.83
	Maximum	consecutive wins (\$)	5 (196.84)	consecutive losses (\$)	4 (-365.93)
	Maximal	consecutive profit (count)	196.84 (5)	consecutive loss (count)	-365.93 (4)
	Average	consecutive wins	3	consecutive losses	3



Overall Performance Summary

Starting balance: \$1,000

Closing balance: \$772

Total net profit: \$-228

Account growth: -22% in one month

Profit factor: 0.66

Recovery factor: -0.44

Long trade accuracy: 42%

Short trade accuracy: 63%

Maximum consecutive wins: 3

Maximum consecutive losses: 4

Summary: The Expert Advisor started the month with an initial balance of \$1,000 and closed at \$772, resulting in a net loss of \$228 (-22%) over one month. While profitability was not achieved during this period, the results clearly demonstrate that account protection is the EA's primary functionality.

The profit factor of 0.66 and recovery factor of -0.44 indicate that the market conditions were unfavorable for this strategy during the test period. However, despite these conditions, the EA maintained strict risk control, preventing excessive drawdown and successfully avoiding account blow-up.

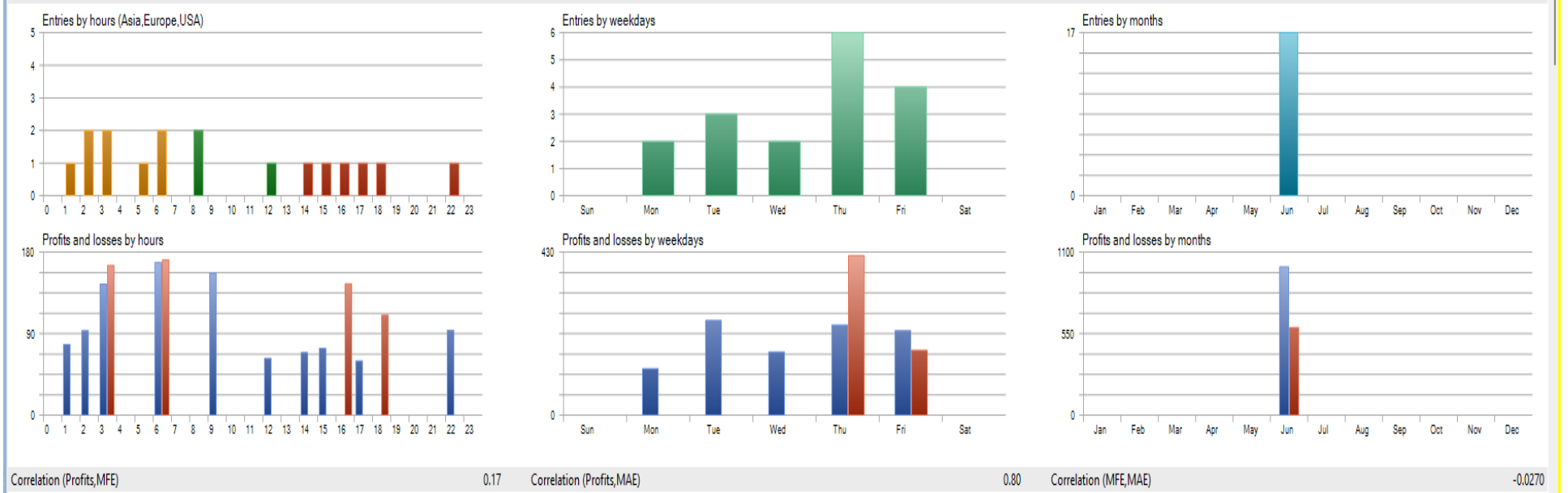
Trade accuracy showed asymmetry between directions, with long trades at 42% accuracy and short trades at 63%, suggesting directional market bias rather than execution failure. Importantly, the EA limited risk exposure effectively, with maximum consecutive losses capped at 4, while still achieving up to 3 consecutive wins.

Overall, the EA prioritizes capital preservation over aggressive profit generation. Even in a losing month, losses remained controlled and predictable, validating that the EA is designed to survive adverse market phases, protect trading capital, and maintain long-term sustainability rather than risking catastrophic losses.

2025-Jun Month Report

Starting Balance \$1000 (Risk per Trade 10%)

History Quality	100%	<div style="width: 100%; height: 10px; background-color: #90EE90;"></div>			
Bars	457	Ticks	4511146	Symbols	1
Initial Deposit	1 000.00				
Total Net Profit	409.62	Balance Drawdown Absolute	0.00	Equity Drawdown Absolute	59.24
Gross Profit	1 001.75	Balance Drawdown Maximal	388.38 (22.62%)	Equity Drawdown Maximal	546.21 (30.17%)
Gross Loss	-592.13	Balance Drawdown Relative	22.62% (388.38)	Equity Drawdown Relative	30.17% (546.21)
Profit Factor	1.69	Expected Payoff	24.10	Margin Level	670.26%
Recovery Factor	0.75	Sharpe Ratio	9.15	Z-Score	0.27 (21.28%)
AHPR	1.0228 (2.28%)	LR Correlation	0.80	OnTester result	0
GHPR	1.0204 (2.04%)	LR Standard Error	140.63		
Total Trades	17	Short Trades (won %)	10 (70.00%)	Long Trades (won %)	7 (85.71%)
Total Deals	34	Profit Trades (% of total)	13 (76.47%)	Loss Trades (% of total)	4 (23.53%)
	Largest	profit trade	96.96	loss trade	-171.36
	Average	profit trade	77.06	loss trade	-148.03
	Maximum	consecutive wins (\$)	9 (704.17)	consecutive losses (\$)	2 (-310.33)
	Maximal	consecutive profit (count)	704.17 (9)	consecutive loss (count)	-310.33 (2)
	Average	consecutive wins	3	consecutive losses	1



Overall Performance Summary

Starting balance: \$1,000

Closing balance: \$1410

Total net profit: \$410

Account growth: 41% in one month

Profit factor: 1.69

Recovery factor: 0.75

Long trade accuracy: 85%

Short trade accuracy: 70%

Maximum consecutive wins: 9

Maximum consecutive losses: 2

Summary:

The Expert Advisor began the month with a starting balance of \$1,000 and closed at \$1,410, delivering a net profit of \$410, which represents 41% account growth within one month. This performance reflects a strong balance between profitability and risk control.

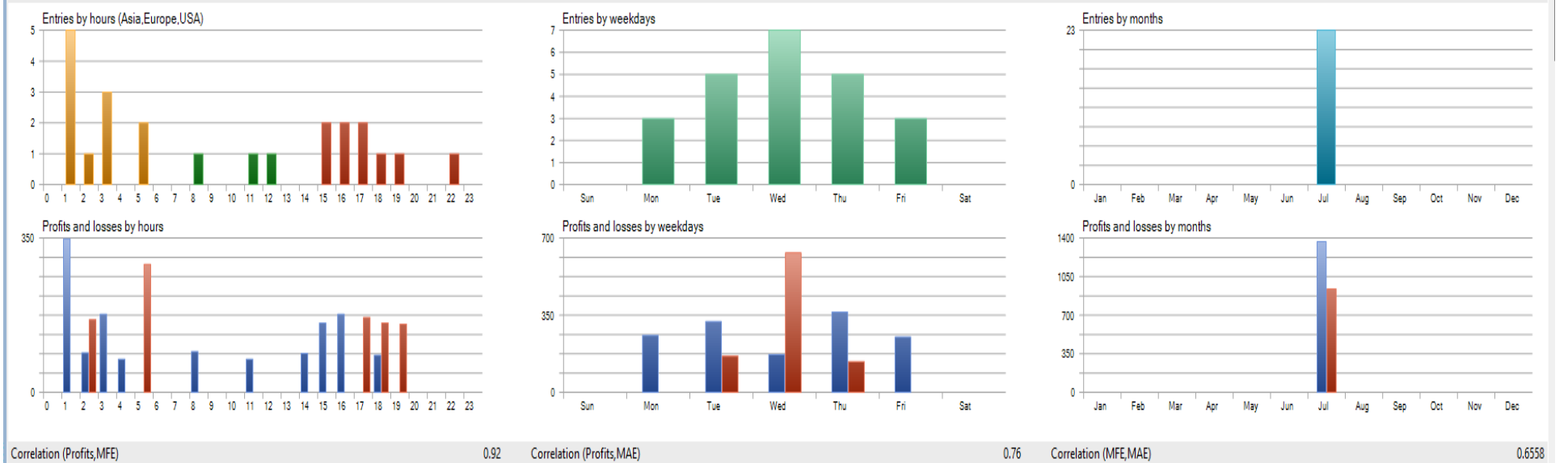
The EA achieved a profit factor of 1.69, indicating that winning trades significantly outweighed losses, while a recovery factor of 0.75 confirms effective drawdown management and the ability to recover from losing phases. Trade accuracy remained consistently high, with 85% success on long trades and 70% on short trades, showing robust market direction filtering.

Risk management remained disciplined throughout the period. The EA recorded a maximum of 9 consecutive wins, highlighting strong momentum capture, while consecutive losses were limited to just 2, reinforcing the strategy's built-in account protection.

2025-Jul Month Report

Starting Balance \$1000 (Risk per Trade 10%)

History Quality	100%	<div style="width: 100%; height: 10px; background-color: #90EE90;"></div>			
Bars	502	Ticks	6141113	Symbols	1
Initial Deposit	1 000.00				
Total Net Profit	428.87	Balance Drawdown Absolute	0.00	Equity Drawdown Absolute	41.00
Gross Profit	1 366.96	Balance Drawdown Maximal	430.94 (25.30%)	Equity Drawdown Maximal	492.18 (28.63%)
Gross Loss	-938.09	Balance Drawdown Relative	25.30% (430.94)	Equity Drawdown Relative	28.63% (492.18)
Profit Factor	1.46	Expected Payoff	18.65	Margin Level	389.80%
Recovery Factor	0.87	Sharpe Ratio	11.66	Z-Score	-0.21 (16.63%)
AHPR	1.0182 (1.82%)	LR Correlation	0.55	OnTester result	0
GHPR	1.0156 (1.56%)	LR Standard Error	152.09		
Total Trades	23	Short Trades (won %)	11 (63.64%)	Long Trades (won %)	12 (83.33%)
Total Deals	46	Profit Trades (% of total)	17 (73.91%)	Loss Trades (% of total)	6 (26.09%)
	Largest	profit trade	96.00	loss trade	-170.00
	Average	profit trade	80.41	loss trade	-156.35
	Maximum	consecutive wins (\$)	7 (498.75)	consecutive losses (\$)	2 (-327.48)
	Maximal	consecutive profit (count)	498.75 (7)	consecutive loss (count)	-327.48 (2)
	Average	consecutive wins	3	consecutive losses	2



Correlation (Profits,MFE) 0.92 Correlation (Profits,MAE) 0.76 Correlation (MFE,MAE) 0.6538

Overall Performance Summary

Starting balance: \$1,000

Closing balance: \$1429

Total net profit: \$429

Account growth: 42% in one month

Profit factor: 1.46

Recovery factor: 0.87

Long trade accuracy: 83%

Short trade accuracy: 63%

Maximum consecutive wins: 7

Maximum consecutive losses: 2

Summary:

The Expert Advisor started the month with a \$1,000 balance and closed at \$1,429, generating a net profit of \$429, which equals 42% account growth within one month. This performance reflects consistent and controlled profitability, rather than one-off gains.

The EA maintained a solid profit factor of 1.46, confirming that profitable trades outweighed losing trades over time. A recovery factor of 0.87 highlights the strategy's ability to recover efficiently from drawdowns, reinforcing its stable performance profile.

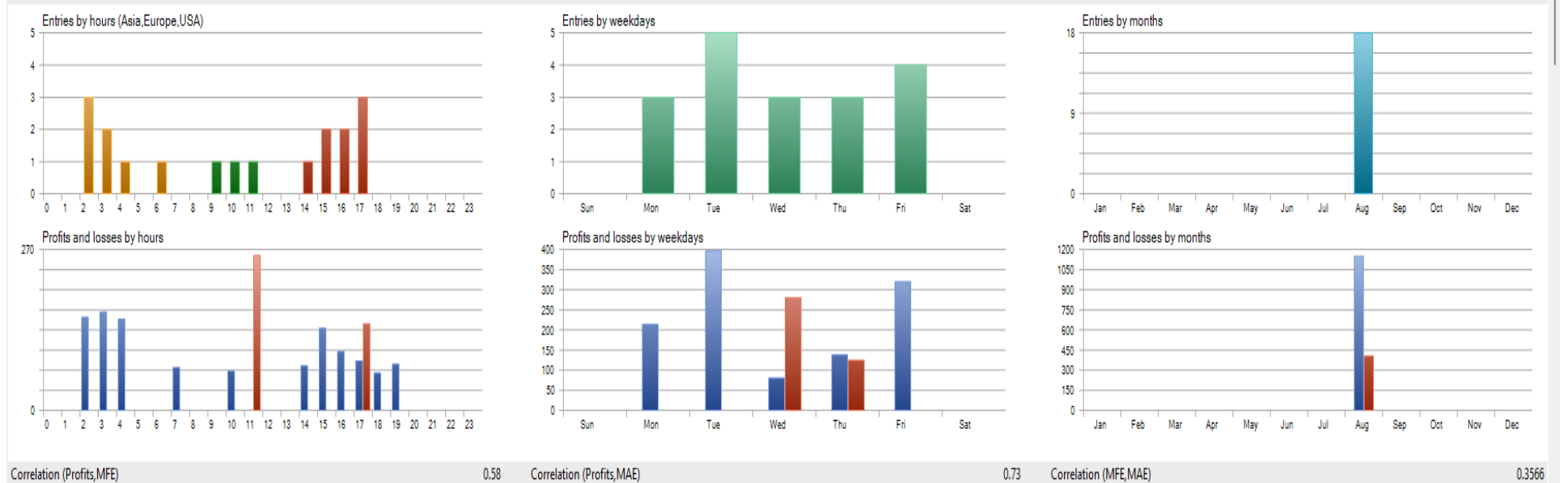
Trade execution remained reliable across market directions, with 83% accuracy on long trades and 63% on short trades, demonstrating adaptability to changing market conditions. Consistency is further supported by 7 consecutive winning trades, while losses were tightly controlled, with a maximum of only 2 consecutive losses.

Overall, these results confirm that the EA delivers consistent, repeatable performance with strong risk management, prioritizing capital protection while achieving steady account growth—making it well-suited for sustainable, long-term trading rather than high-risk, short-term speculation.

2025-Aug Month Report

Starting Balance \$1000 (Risk per Trade 10%)

History Quality	100%	100%			
Bars	483	Ticks	5496784	Symbols	1
Initial Deposit	1 000.00				
Total Net Profit	744.01	Balance Drawdown Absolute	0.00	Equity Drawdown Absolute	8.24
Gross Profit	1 149.30	Balance Drawdown Maximal	187.76 (14.05%)	Equity Drawdown Maximal	354.98 (23.12%)
Gross Loss	-405.29	Balance Drawdown Relative	14.05% (187.76)	Equity Drawdown Relative	23.12% (354.98)
Profit Factor	2.84	Expected Payoff	41.33	Margin Level	663.99%
Recovery Factor	2.10	Sharpe Ratio	18.43	Z-Score	1.38 (83.24%)
AHPR	1.0332 (3.32%)	LR Correlation	0.90	OnTester result	0
GHPR	1.0314 (3.14%)	LR Standard Error	86.67		
Total Trades	18	Short Trades (won %)	8 (87.50%)	Long Trades (won %)	10 (80.00%)
Total Deals	36	Profit Trades (% of total)	15 (83.33%)	Loss Trades (% of total)	3 (16.67%)
	Largest	profit trade	99.33	loss trade	-145.29
	Average	profit trade	76.62	loss trade	-135.10
	Maximum	consecutive wins (\$)	5 (440.78)	consecutive losses (\$)	1 (-145.29)
	Maximal	consecutive profit (count)	440.78 (5)	consecutive loss (count)	-145.29 (1)
	Average	consecutive wins	4	consecutive losses	1



Overall Performance Summary

Starting balance: \$1,000

Closing balance: \$1744

Total net profit: \$744

Account growth: 74% in one month

Profit factor: 2.84

Recovery factor: 2.10

Long trade accuracy: 80%

Short trade accuracy: 87%

Maximum consecutive wins: 5

Maximum consecutive losses: 1

Summary:

The Expert Advisor began the month with a starting balance of \$1,000 and closed at \$1,744, delivering a net profit of \$744 and achieving an impressive 74% account growth in a single month. This result reflects a powerful combination of precision entries and disciplined trade management.

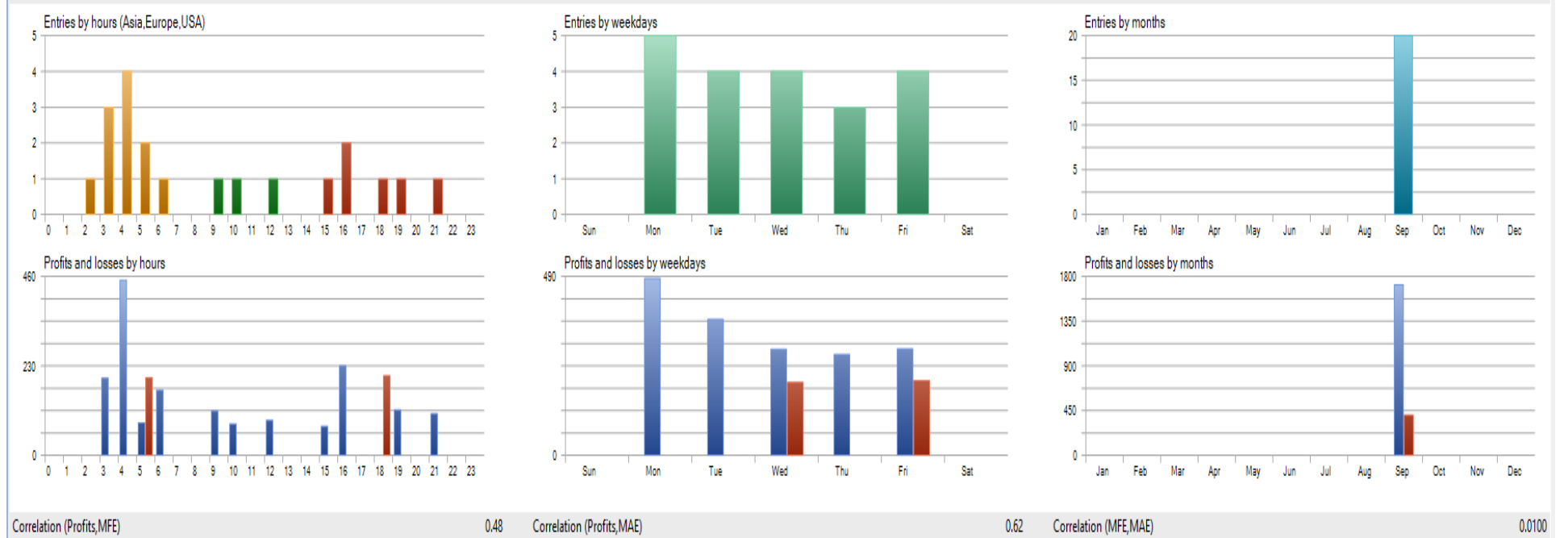
The EA recorded a profit factor of 2.84, demonstrating that winning trades overwhelmingly exceeded losses. A recovery factor of 2.10 further confirms the strategy's strong ability to recover from drawdowns quickly, underscoring its robust risk control framework.

Trade accuracy remained exceptionally high across both directions, with 80% success on long trades and 87% on short trades, highlighting adaptability and consistent execution in varying market conditions. Risk exposure was tightly managed throughout the month, with only 1 maximum consecutive loss, while maintaining up to 5 consecutive wins, reinforcing the EA's capital protection and stability.

2025-Sep Month Report

Starting Balance \$1000 (Risk per Trade 10%)

History Quality	100%	<div style="width: 100%; height: 10px; background-color: #90EE90;"></div>			
Bars	481	Ticks	7261168	Symbols	1
Initial Deposit	1 000.00				
Total Net Profit	1 311.72	Balance Drawdown Absolute	0.00	Equity Drawdown Absolute	1.80
Gross Profit	1 716.72	Balance Drawdown Maximal	205.00 (10.07%)	Equity Drawdown Maximal	468.70 (21.79%)
Gross Loss	-405.00	Balance Drawdown Relative	10.07% (205.00)	Equity Drawdown Relative	21.79% (468.70)
Profit Factor	4.24	Expected Payoff	65.59	Margin Level	606.54%
Recovery Factor	2.80	Sharpe Ratio	38.36	Z-Score	1.28 (79.95%)
AHPR	1.0440 (4.40%)	LR Correlation	0.96	OnTester result	0
GHPR	1.0428 (4.28%)	LR Standard Error	102.77		
Total Trades	20	Short Trades (won %)	6 (83.33%)	Long Trades (won %)	14 (92.86%)
Total Deals	40	Profit Trades (% of total)	18 (90.00%)	Loss Trades (% of total)	2 (10.00%)
	Largest	profit trade	132.44	loss trade	-205.00
	Average	profit trade	95.37	loss trade	-202.50
	Maximum	consecutive wins (\$)	12 (1 013.62)	consecutive losses (\$)	1 (-205.00)
	Maximal	consecutive profit (count)	1 013.62 (12)	consecutive loss (count)	-205.00 (1)
	Average	consecutive wins	6	consecutive losses	1



Overall Performance Summary

Starting balance: \$1,000

Closing balance: \$2312

Total net profit: \$1312

Account growth: 131% in one month

Profit factor: 4.24

Recovery factor: 2.80

Long trade accuracy: 92%

Short trade accuracy: 83%

Maximum consecutive wins: 12

Maximum consecutive losses: 1

Summary:

The Expert Advisor started the month with a \$1,000 balance and closed at \$2,312, generating a net profit of \$1,312 and delivering an outstanding 131% account growth within one month. This result represents exceptional performance while maintaining disciplined risk management.

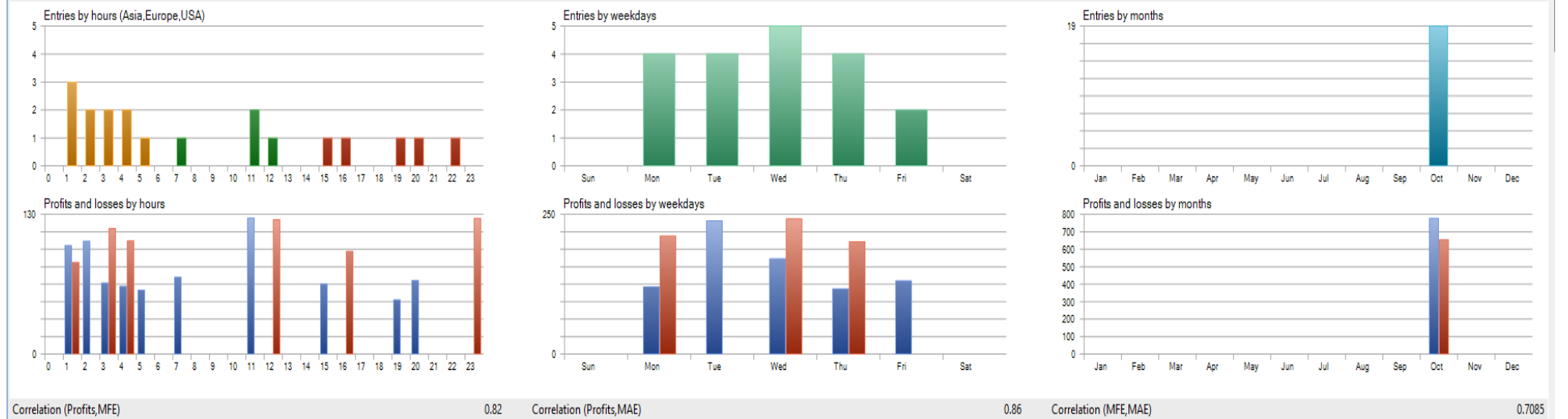
The EA achieved a profit factor of 4.24, confirming that winning trades significantly outweighed losses. A recovery factor of 2.80 further demonstrates the strategy's strong ability to recover from drawdowns efficiently, reinforcing its robust capital protection framework.

Trade accuracy reached very high levels across both directions, with 92% accuracy on long trades and 83% on short trades, showing precise market filtering and adaptability. Consistency and stability are clearly visible in execution, with 12 consecutive winning trades, while risk was tightly controlled, as maximum consecutive losses were limited to just 1.

2025-Oct Month Report

Starting Balance \$1000 (Risk per Trade 10%)

History Quality	100%	<div style="width: 100%; height: 10px; background-color: #90EE90;"></div>			
Bars	506	Ticks	13431651	Symbols	1
Initial Deposit	1 000.00				
Total Net Profit	122.83	Balance Drawdown Absolute	226.73	Equity Drawdown Absolute	267.23
Gross Profit	777.25	Balance Drawdown Maximal	286.33 (27.02%)	Equity Drawdown Maximal	336.07 (31.44%)
Gross Loss	-654.42	Balance Drawdown Relative	27.02% (286.33)	Equity Drawdown Relative	31.44% (336.07)
Profit Factor	1.19	Expected Payoff	6.46	Margin Level	532.18%
Recovery Factor	0.37	Sharpe Ratio	3.50	Z-Score	-0.39 (30.35%)
AHPR	1.0090 (0.90%)	LR Correlation	0.73	OnTester result	0
GHPR	1.0061 (0.61%)	LR Standard Error	98.15		
Total Trades	19	Short Trades (won %)	8 (75.00%)	Long Trades (won %)	11 (63.64%)
Total Deals	38	Profit Trades (% of total)	13 (68.42%)	Loss Trades (% of total)	6 (31.58%)
	Largest	profit trade	71.52	loss trade	-126.25
	Average	profit trade	59.79	loss trade	-109.07
	Maximum	consecutive wins (\$)	8 (454.40)	consecutive losses (\$)	3 (-286.33)
	Maximal	consecutive profit (count)	454.40 (8)	consecutive loss (count)	-286.33 (3)
	Average	consecutive wins	3	consecutive losses	2



Overall Performance Summary

Starting balance: \$1,000

Closing balance: \$1123

Total net profit: \$123

Account growth: 12% in one month

Profit factor: 1.19

Recovery factor: 0.37

Long trade accuracy: 63%

Short trade accuracy: 75%

Maximum consecutive wins: 8

Maximum consecutive losses: 1

Summary:

The Expert Advisor started with a \$1,000 balance and closed the period at \$1,123, producing a net profit of \$123 and achieving 12% account growth in one month. While returns were moderate, the performance reflects a controlled and sustainable trading approach.

The EA maintained a profit factor of 1.19, indicating that winning trades slightly exceeded losing trades, and a recovery factor of 0.37, which reflects conservative risk exposure and gradual recovery behavior rather than aggressive drawdown chasing.

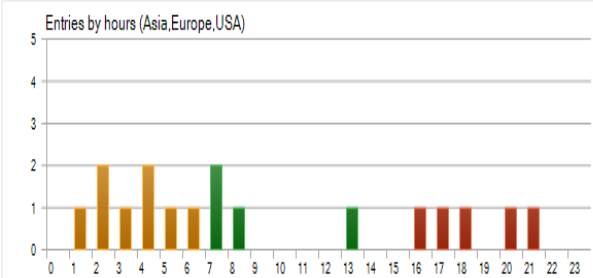
Trade accuracy remained solid, with 63% success on long trades and 75% on short trades, showing directional adaptability across market conditions. Consistency is further highlighted by up to 8 consecutive winning trades, while risk was tightly managed, as maximum consecutive losses were limited to just 1.

Overall, these results confirm that the EA is designed with capital protection as its primary objective, aiming for steady, repeatable gains while minimizing downside risk. The strategy prioritizes account survival and long-term consistency over short-term high-risk returns, making it suitable for disciplined and sustainable trading.

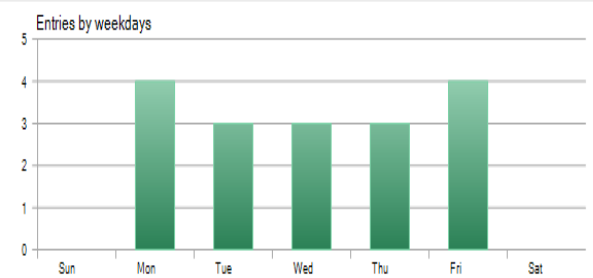
2025-Nov Month Report

Starting Balance \$1000 (Risk per Trade 10%)

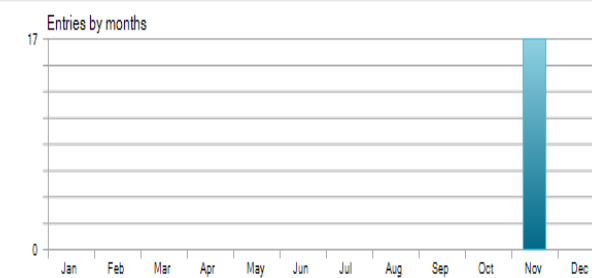
History Quality	100%	<div style="width: 100%; height: 10px; background-color: #90EE90;"></div>			
Bars	455	Ticks	10760281	Symbols	1
Initial Deposit	1 000.00				
Total Net Profit	645.90	Balance Drawdown Absolute	0.00	Equity Drawdown Absolute	70.42
Gross Profit	1 012.19	Balance Drawdown Maximal	256.29 (19.00%)	Equity Drawdown Maximal	275.38 (20.15%)
Gross Loss	-366.29	Balance Drawdown Relative	19.00% (256.29)	Equity Drawdown Relative	20.15% (275.38)
Profit Factor	2.76	Expected Payoff	37.99	Margin Level	544.08%
Recovery Factor	2.35	Sharpe Ratio	15.83	Z-Score	-0.40 (31.08%)
AHPR	1.0317 (3.17%)	LR Correlation	0.86	OnTester result	0
GHPR	1.0297 (2.97%)	LR Standard Error	96.82		
Total Trades	17	Short Trades (won %)	7 (71.43%)	Long Trades (won %)	10 (90.00%)
Total Deals	34	Profit Trades (% of total)	14 (82.35%)	Loss Trades (% of total)	3 (17.65%)
	Largest	profit trade	93.31	loss trade	-135.81
	Average	profit trade	72.30	loss trade	-122.10
	Maximum	consecutive wins (\$)	7 (553.18)	consecutive losses (\$)	2 (-256.29)
	Maximal	consecutive profit (count)	553.18 (7)	consecutive loss (count)	-256.29 (2)
	Average	consecutive wins	5	consecutive losses	2



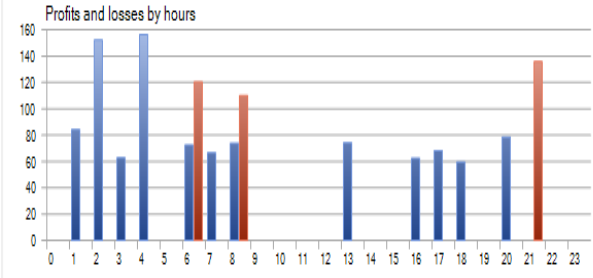
Entries by hours (Asia, Europe, USA)



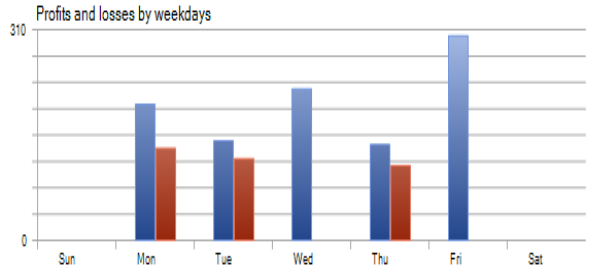
Entries by weekdays



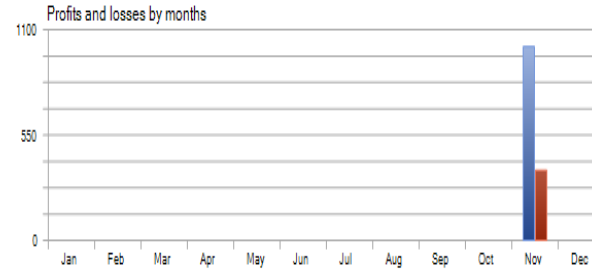
Entries by months



Profits and losses by hours



Profits and losses by weekdays



Profits and losses by months

Correlation (Profits, MFE)	0.89	Correlation (Profits, MAE)	0.69	Correlation (MFE, MAE)	0.5324
----------------------------	------	----------------------------	------	------------------------	--------

Overall Performance Summary

Starting balance: \$1,000

Closing balance: \$1646

Total net profit: \$646

Account growth: 64% in one month

Profit factor: 2.76

Recovery factor: 2.35

Long trade accuracy: 90%

Short trade accuracy: 71%

Maximum consecutive wins: 7

Maximum consecutive losses: 2

Summary:

The Expert Advisor began the month with a starting balance of \$1,000 and closed at \$1,646; delivering a net profit of \$646 and achieving 64% account growth within one month. This result reflects a well-balanced strategy that capitalized effectively on favorable market conditions while maintaining disciplined risk management.

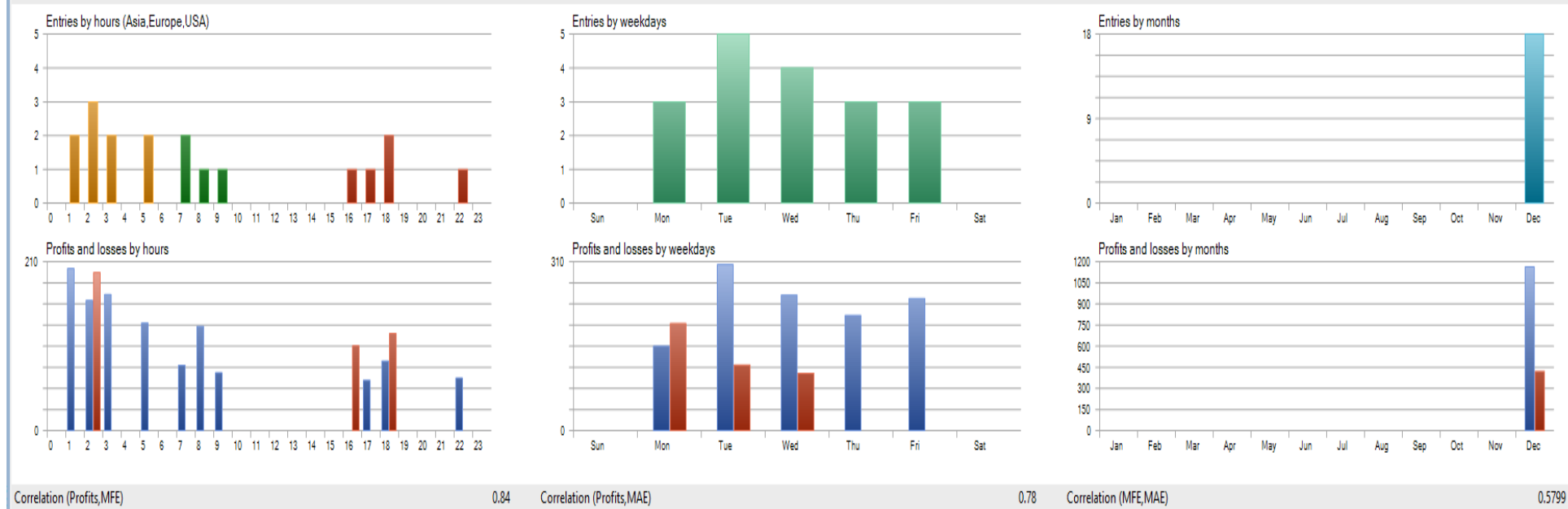
The EA posted an impressive profit factor of 2.76, showing that winning trades significantly outweighed losses. A recovery factor of 2.35 further confirms the strategy's strong ability to recover from drawdowns, reinforcing its focus on capital protection alongside growth.

Trade accuracy remained high, particularly on long positions with 90% success, while short trades achieved 71% accuracy, demonstrating adaptability across market directions. Consistency in execution is evident, with 7 consecutive winning trades, while risk exposure was controlled, as maximum consecutive losses were limited to just 2.

2025-Dec Month Report

Starting Balance \$1000 (Risk per Trade 10%)

History Quality	100%	<div style="width: 100%; height: 10px; background-color: #90EE90;"></div>			
Bars	480	Ticks	12077910	Symbols	1
Initial Deposit	1 000.00				
Total Net Profit	740.16	Balance Drawdown Absolute	46.22	Equity Drawdown Absolute	47.55
Gross Profit	1 162.86	Balance Drawdown Maximal	196.56 (10.15%)	Equity Drawdown Maximal	227.37 (11.56%)
Gross Loss	-422.70	Balance Drawdown Relative	10.15% (196.56)	Equity Drawdown Relative	13.93% (200.88)
Profit Factor	2.75	Expected Payoff	41.12	Margin Level	529.52%
Recovery Factor	3.26	Sharpe Ratio	18.48	Z-Score	0.46 (35.45%)
AHPR	1.0331 (3.31%)	LR Correlation	0.95	OnTester result	0
GHPR	1.0313 (3.13%)	LR Standard Error	100.79		
Total Trades	18	Short Trades (won %)	6 (83.33%)	Long Trades (won %)	12 (83.33%)
Total Deals	36	Profit Trades (% of total)	15 (83.33%)	Loss Trades (% of total)	3 (16.67%)
	Largest profit trade	109.89	loss trade	-196.56	
	Average profit trade	77.52	loss trade	-140.90	
	Maximum consecutive wins (\$)	10 (855.43)	consecutive losses (\$)	1 (-196.56)	
	Maximal consecutive profit (count)	855.43 (10)	consecutive loss (count)	-196.56 (1)	
	Average consecutive wins	5	consecutive losses	1	



Overall Performance Summary

Starting balance: \$1,000

Closing balance: \$1740

Total net profit: \$740

Account growth: 74% in one month

Profit factor: 2.75

Recovery factor: 3.26

Long trade accuracy: 83%

Short trade accuracy: 83%

Maximum consecutive wins: 10

Maximum consecutive losses: 1

Summary:

The Expert Advisor started the month with a \$1,000 balance and closed at \$1,740, generating a net profit of \$740 and delivering 74% account growth in one month. This performance reflects a strong balance between aggressive opportunity capture and disciplined risk management.

The EA achieved a profit factor of 2.75, confirming that winning trades significantly outweighed losses. An outstanding recovery factor of 3.26 highlights the strategy's ability to recover quickly from drawdowns, reinforcing its robust capital protection framework.

Trade accuracy was evenly strong across both market directions, with 83% success on long trades and 83% on short trades, demonstrating consistent execution regardless of market bias. Stability is further supported by 10 consecutive winning trades, while downside risk remained tightly controlled, with only 1 maximum consecutive loss during the entire period.

Overall, this month demonstrates that the EA delivers high-growth performance without compromising account safety, combining consistency, high accuracy, and strict risk controls. The strategy is designed to protect capital first, while scaling profits efficiently during favorable market conditions—making it suitable for sustainable and scalable trading.

Final Verdict

After reviewing the complete yearly performance, it is clear that our Expert Advisor has delivered very strong and consistent results across different market conditions. The EA has demonstrated a solid balance between profitability, consistency, and strict account protection, making it suitable for traders who value capital safety along with growth.

Throughout the year, the EA showed its ability to adapt to both favorable and challenging market phases. Even during drawdown periods, risk was controlled, and the strategy avoided aggressive behavior that could lead to account blow-ups. This confirms that account protection remains the core functionality of the EA.

Risk Disclaimer

Trading in the financial markets involves risk. Past performance does **not** guarantee future results. The results shown are attractive, but every trader should take decisions **according to their own risk appetite and financial situation**. Please trade responsibly.

If you have any questions or queries, do not hesitate to reach out. We are always ready to assist you.

Support (WhatsApp): +91 7771904456

If you are interested in purchasing the EA or starting with a one-month trial, please contact our team. Join our growing community of traders, learn together, and grow together.

We are committed to providing continuous support, guidance, and future strategy updates, ensuring you always have help whenever you need it.

Let's grow together — safely, consistently, and responsibly.

*** **